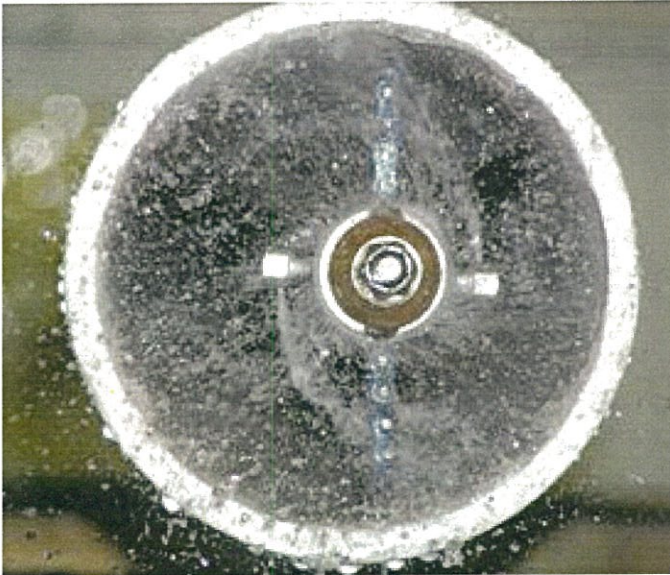


*Cnt.r.* **KUT**<sup>TM</sup>  
ELITE  
mini



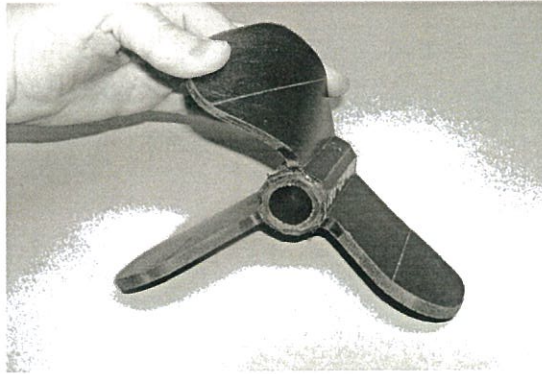
*Cnt.r.* **KUT**<sup>TM</sup>  
ELITE  
mini



*First Flexible  
mini-Chain/Cable  
Centering Device*

## Features:

- A mechanical means of pipe cleaning equipped with a flexible light weight centering guide vane system.
- Centering Guide Vane field trimmable for maximum usability.
- Centering Guide Vane manufactured from an Aerospace Elastomer.
- Centering Guide Vane mechanically attached to stainless steel body for easy change out.
- Advanced jet porting system maximizes both rotational force and thrust.
- Cnt-r-KUT rotor accepts both chains and cables.
- Options:
  - Second rotor configured for water jets only.
  - Front cutter jet
  - Heavy duty cable



## CNT-R-KUT™ ELITE KIT

<u>Description</u>	<u>Qty</u>
Cnt-r-Kut Elite	1
Stainless Steel Body	1
GuideVane 6	1
Rotor Head for Chain	1
Chain Set	3
Cable Set	3
Orifice Cleaner	1
Tool Case (lockable)	1
Utility Knife	1
Silver Marker	1
Straight Edge	1
Carrying Case	1
8-32 Screws	3
1/16" Allen Wrench	1
4-40 Screws	2
1/4-28 Locknut	1
3/32" Allen Wrench	1



## Cleaning and Storage:

1. Simple.
2. Rinse clean with fresh water.
3. Apply a small amount of WD40 down throat of nozzle.
4. Rotate rotor to disperse WD40.
5. Place into carrying case.
6. Ready for next use.

## Reference Material:

1. Safety
2. Terms and Conditions
3. Warranty
4. See [www.arthurproducts.com](http://www.arthurproducts.com)



## Trimming of Guide Vanes:

1. Measure and mark vanes using Cnt-r-KUT straight edge.
2. Lay Cnt-r-KUT straight edge on marked guide vanes.
3. Using supplied Utility knife trim each guide vane to desired size. \*\* Hint - Using Windex will aid in vane cutting process.\*\*

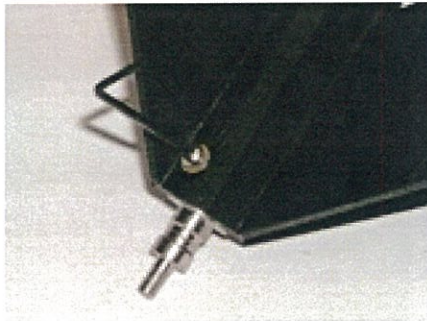
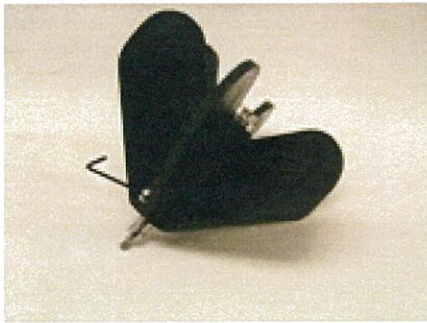
### TRIM LENGTH FROM BASE OF VANE

6" PIPE	2.300"
4" PIPE	1.300"
3" PIPE	.850"



## Guide Vane Replacement:

1. Remove three attachment screws.
2. Clean Stainless Steel body of any contamination. Dry thoroughly.
3. Using Windex or water to lightly lubricate Stainless Steel body.
4. Slide on replacement Guide Vane.
5. Align holes in Guide Vane with threaded holes in Stainless Steel body.
6. Using 3/32" Allen Wrench install 8-32 button head screws.



## Chain & Cable Change:

1. Remove top lock nut
2. Remove rotor cap
3. Remove allen screws which capture chain or cable.
4. Remove Chain or Cable.
5. Clean rotor
6. Install new desired Chain or Cable.
7. Reinstall attachment screws.
8. Inspect and clean body stem if required.
9. Replace Rotor \*\* Check for correct rotation\*\*
10. Replace cap

